



210 Series non-lubricated selector valves are designed to operate in systems where instantaneous port selection is desired. Since lubricants are not used, re lubrication is not required. There is no lubricant to freeze and lock the valve or to contaminate fine fluids. The O ring sealed cap and stem eliminate leakage. The series is designed for panel or bracket mounting Standard with pointer lever to indicate the desired porting selection and can be rotated 360

Pressure Rating:

30 P.S.I.

Temperature Rating:

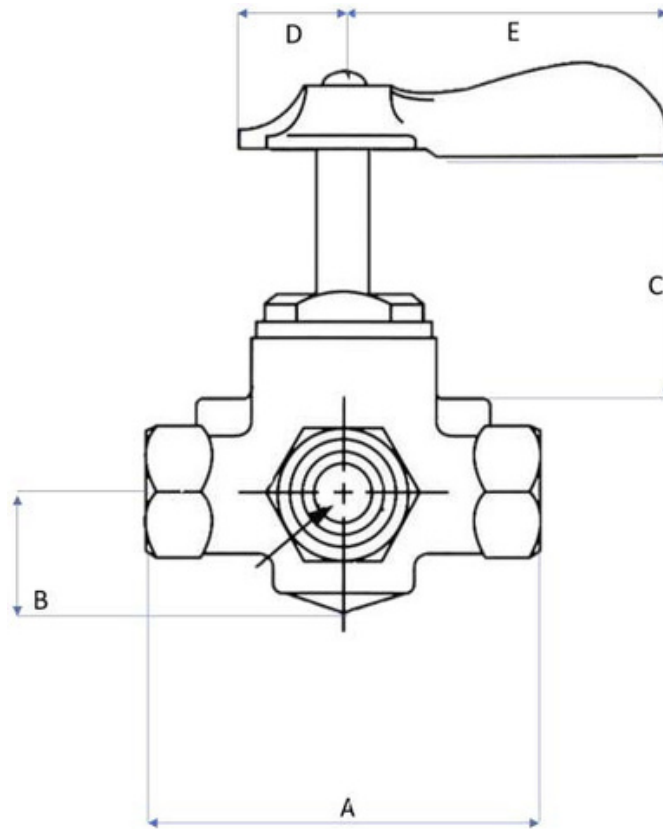
-40 to 180 F

Various stem lengths

and handle rotations available

Part #	FNPT		FNPT		FNPT
210C-J	1/8"	X	1/8"	X	1/8"
210C-L	1/4"	X	1/4"	X	1/4"
210C-N	3/8"	X	3/8"	X	3/8"

DIMENSIONS



Part #	A	B	C	D	E
210C-J	2.12"	0.69"	1.38"	0.59"	1.90"
210C-L	2.12"	0.69"	1.38"	0.59"	1.90"
210C-N	2.24"	0.69"	1.38"	0.59"	1.90"